

### Introduction

HUATO thermocouple data logger is a rapid, reliable temperature instrument with high precision. It can support 8 types thermocouple such as K, J, E, T, R, S, N, and B. Before delivered to the customer, all the HE series instruments have been calibrated by FLUKE thermocouple calibrator. Customers can have many choices according to their demands.

### HE804

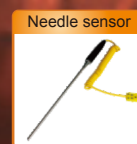
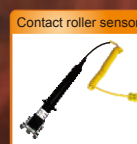
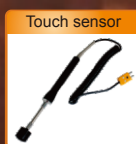


### Features:

- NIST Traceable Calibration Report Available.
- Each Channel Store Up to 3,6000 Data Points.
- Large LCD Display 8 Channels, Switchable °C or °F.
- Support 8 Types Thermocouple: K, J, E, T, R, S, N, B.
- Sampling Rate 1 Sec & Logging Cycle From 2 Seconds to 24 Hour.
- Download data by connecting USB or computer real time data monitoring.
- Power supply: 9V/1A external power supply and battery (9V block) supply.



### Thermocouple Type (Optional Accessories)



HE802



### Standard Accessories



### Technical Specifications

Sampling rate	Fas test1/sec, from1 to 240 seconds can be set.
Power supply	9V Block battery
Display	Large-screen LCD,4 sets of temperature data also showed.
Product dimension	189x69x44mm(7.44"x2.71"x1.73"inch)
LCD size	54mm × 44mm(2.12" × 1.73"inch)
Weight	320g
Accessories	PC-Software, Data cable, 9V battery

### Model List

Model	Thermometer			Thermometer Logger		
	HE701	HE702	HE704	HE801	HE802	HE804
Temperature Channel	1	2	4	1	2	4
Temperature accuracy	±1°C±5‰	±1°C±5‰	±1°C±5‰	±1°C±5‰	±1°C±5‰	±1°C±5‰
Automatic Recording Capacity	---	---	---	36000	36000	36000
Handheld Record Capacity	88					
Sensor type	K J E T R S N B					
Measuring range	-200~1800°C					

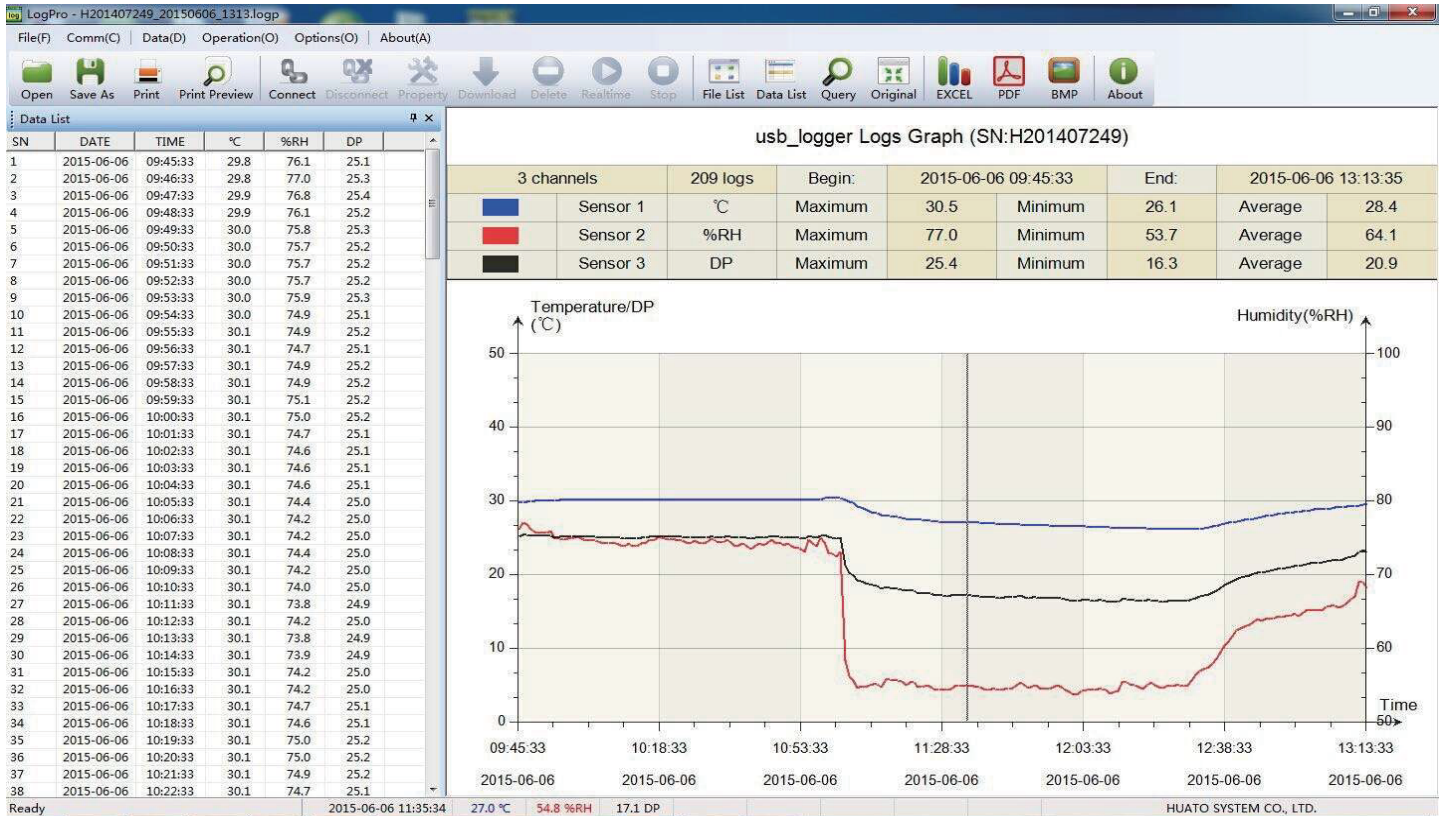
### Applications

Widely applied in Electronics, food industry, warehousing, textile industry, incubator and scientific research etc.



### LogPro Recorder Analysis Software

LogPro software is Huato temperature and humidity recorder dedicated data analysis software, beautiful interface, elegant, easy to use and efficient, the software is very comprehensive, can logger attribute settings, download logger data, graphically analyze data, export the data to Excel / PDF / BMP and other formats.



SN	Time	Temp (°C)	Humi (%RH)
1	2015-03-06 14:52:40	20.3	70.5
2	2015-03-06 14:53:40	20.2	71.1
3	2015-03-06 14:54:40	20.1	71.9
4	2015-03-06 14:55:40	20.1	71.9
5	2015-03-06 14:56:40	20.0	72.3
6	2015-03-06 14:57:40	20.0	72.6
7	2015-03-06 14:58:40	20.0	72.6
8	2015-03-06 14:59:40	20.0	72.7
9	2015-03-06 15:00:40	20.1	72.7
10	2015-03-06 15:01:40	20.0	72.8
11	2015-03-06 15:02:40	20.0	72.8
12	2015-03-06 15:03:40	19.9	73.1

**Data Logger Setup**

- A. System**
  - Name: Logger
  - Type: Data Logger
  - Model: S380WS
  - SN: HE20149997
  - Firmware: E1107
- B. Sampling**
  - Mode: Standby
  - Battery: Normal
  - Sampling Interval(s): 10
  - Logging Interval(s): 60
  - Downmode: Save always
- C. Storage**
  - Start Mode: No delay
  - Stop Mode: FIFO
  - Delay Time: 0
  - Logs: 525
  - Total: 129024
- D. Alarm**
  - Alarms: Off
  - LCD: On
  - Power: Normal
  - CH1 High: 70
  - CH1 Low: -20
  - CH2 High: 100
  - CH2 Low: 0
- E. Offset**
  - CH1: 0.0
  - CH2: 0.0

Ready Time: --- STANDBY --- HUATO SYSTEM CO., LTD.

**TesPro V1.20 - HE20144663\_20150618\_0937.tesp**

**Records Report (HE20144663)**

TOTAL LOGS:57, CHANNELS:1, BEGIN:2015-06-18 09:35:52, END:2015-06-18 09:37:44

CHANNEL 01, C, MAX:32.8, MIN:32.1, AVE:32.4

SN	DATE	TIME	1st
1	2015-06-18	09:35:52	32.1
2	2015-06-18	09:35:54	32.8
3	2015-06-18	09:35:56	32.6
4	2015-06-18	09:35:58	32.1
5	2015-06-18	09:36:00	32.4
6	2015-06-18	09:36:02	32.5
7	2015-06-18	09:36:04	32.5
8	2015-06-18	09:36:06	32.2
9	2015-06-18	09:36:08	32.4
10	2015-06-18	09:36:10	32.1
11	2015-06-18	09:36:12	32.4
12	2015-06-18	09:36:14	32.7
13	2015-06-18	09:36:16	32.7
14	2015-06-18	09:36:18	32.4
15	2015-06-18	09:36:20	32.2
16	2015-06-18	09:36:22	32.1
17	2015-06-18	09:36:24	32.2
18	2015-06-18	09:36:26	32.5
19	2015-06-18	09:36:28	32.4
20	2015-06-18	09:36:30	32.2
21	2015-06-18	09:36:32	32.3
22	2015-06-18	09:36:34	32.3
23	2015-06-18	09:36:36	32.6
24	2015-06-18	09:36:38	32.5
25	2015-06-18	09:36:40	32.3
26	2015-06-18	09:36:42	32.6
27	2015-06-18	09:36:44	32.7
28	2015-06-18	09:36:46	32.6
29	2015-06-18	09:36:48	32.5
30	2015-06-18	09:36:50	32.4
31	2015-06-18	09:36:52	32.6
32	2015-06-18	09:36:54	32.4
33	2015-06-18	09:36:56	32.5
34	2015-06-18	09:36:58	32.6
35	2015-06-18	09:37:00	32.4
36	2015-06-18	09:37:02	32.4
37	2015-06-18	09:37:04	32.4

Ready 2015-06-18 09:35:58 32.1 C HUATO ELECTRIC CO., LTD.

**TesPro V1.20 - HE20144663\_20150618\_0937.tesp**

**Records Report (HE20144663)**

TOTAL LOGS:57, CHANNELS:1, BEGIN:2015-06-18 09:35:52, END:2015-06-18 09:37:44

CHANNEL 01, C, MAX:32.8, MIN:32.1, AVE:32.4

A. System	
1. Name	
2. SN	HE20144663
3. Catalogue	Instruments
4. Model	HE801
5. Hardware	V506

B. Sampling	
1. Sampling Interval	1
2. Log Interval	2

C. Storage	
1. Logs Count	0
2. MANU Logs	5
3. Capacity	36738

D1.CH1	
1. CH1 High Limit	1800
2. CH1 Low Limit	0
3. Offset	0

D2.CH2	
1. Upper Limit	1800
2. Low Limit	-200
3. Offset	0

D3.CH3	
1. CH3 High	1800
2. CH3 Low	-200
3. Offset	0

D4.CH4	
1. CH4 High	1800
2. CH4 Low	-200
3. Offset	0

3. Capacity	
-------------	--

Ready 2015-06-18 09:36:06 32.2 C HUATO ELECTRIC CO., LTD.